

# Varied Fluency

## Step 4: Adding '-es'

### National Curriculum Objectives:

English Year 1: (1G6.3) [Regular plural noun suffixes –s or –es \[for example, dog, dogs; wish, wishes\], including the effects of these suffixes on the meaning of the noun](#)

Terminology for pupils:

- (1G6.3) [singular](#)
- (1G6.3) [plural](#)

### Differentiation:

**Developing** Questions to support adding '-es' for plurals. Most words featured are easily decodable without split digraphs.

**Expected** Questions to support adding '-es' for plurals. Words featured are decodable with knowledge of all phonetic sounds required for the Year 1 phonics screening.

**Greater Depth** Questions to support adding '-es' for plurals. Includes some words ending in '-o'. Nouns used are in full sentences where sentences contain some words which cannot be easily decoded.

[More resources](#) from our Grammar, Punctuation and Spelling scheme of work.

Did you like this resource? Don't forget to [review](#) it on our website.

## Adding '-es'

1a. Add '-es' to the words and then match them to the pictures.

brush\_\_\_\_\_



fox\_\_\_\_\_



dress\_\_\_\_\_



VF

## Adding '-es'

1b. Add '-es' to the words and then match them to the pictures.

bus\_\_\_\_\_



bush\_\_\_\_\_



branch\_\_\_\_\_



VF

2a. Circle the correct spelling to match the picture.



witchs

witches



VF

2b. Circle the correct spelling to match the picture.



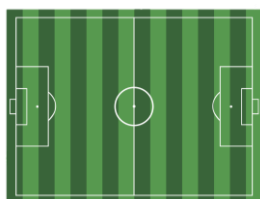
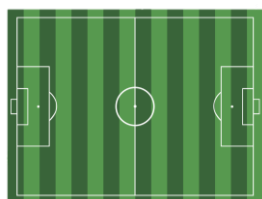
boxes

boxs



VF

3a. True or false? The word below is spelt correctly.



pitchs



VF

3b. True or false? The word below is spelt correctly.



benchs



VF

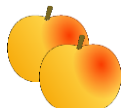
## Adding '-es'

4a. Add '-es' to the words and then match them to the pictures.

peach\_\_\_\_\_



six\_\_\_\_\_



dish\_\_\_\_\_

66



VF

## Adding '-es'

4b. Add '-es' to the words and then match them to the pictures.

cross\_\_\_\_\_



glass\_\_\_\_\_



lunch\_\_\_\_\_



VF

5a. Circle the correct spelling to match the picture.



boxs

boxes

box

boxess



VF

5b. Circle the correct spelling to match the picture.



bosss

boss

bosses

boses



VF

6a. True or false? The word below is spelt correctly.



watchs



VF

6b. True or false? The word below is spelt correctly.



bunchess

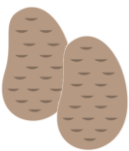


VF

## Adding '-es'

5a. Add '-es' to the words and then match them to the pictures.

sandwich\_\_\_\_\_



box\_\_\_\_\_



potato\_\_\_\_\_



VF

## Adding '-es'

5b. Add '-es' to the words and then match them to the pictures.

compass\_\_\_\_\_



volcano\_\_\_\_\_



tomato\_\_\_\_\_



VF

6a. Circle the correct plural spelling in each sentence.

A. The fairy godmother gave me three wishess/wishes.

B. My gran gives me lots of kises/kisses when she visits.



VF

6b. Circle the correct plural spelling in each sentence.

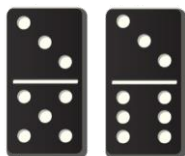
A. In Year One there are two classes/classess.

B. My parents enjoy taking part in quizzes/quizzes.



VF

7a. True or false? The word below is spelt correctly.



dominos



VF

7b. True or false? The word below is spelt correctly.



dishess



VF

**Varied Fluency**  
**Adding '-es'**

**Developing**

- 1a. **brushes, foxes, dresses**
- 2a. **witches**
- 3a. **False, it should be 'pitches'.**

**Expected**

- 4a. **peaches, sixes, dishes**
- 5a. **boxes**
- 6a. **False, it should be 'watches'.**

**Greater Depth**

- 7a. **sandwiches, boxes, potatoes**
- 8a. **A. wishes B. kisses**
- 9a. **False, it should be 'dominoes'.**

**Varied Fluency**  
**Adding '-es'**

**Developing**

- 1b. **buses, bushes, branches**
- 2b. **boxes**
- 3b. **False, it should be 'benches'.**

**Expected**

- 4b. **crosses, glasses, lunches**
- 5b. **bosses**
- 6b. **False, it should be 'bunches'.**

**Greater Depth**

- 7b. **compasses, volcanoes, tomatoes**
- 8b. **A. classes B. quizzes**
- 9b. **False, it should be 'dishes'.**